

3

FUNCTIONALITY

INTRODUCTION	2
ESTABLISHING THE COMMUNICATION CONNECTION	2
MENU BAR.....	7
FILE UPLOAD.....	7
SUBMISSION STATUS	7
HELP	8
LOGOUT	11
WELCOME PAGE.....	11
SUBMITTING OASIS DATA	11
SUBMISSION SYSTEM ERRORS	16
OASIS FILE SIZE ERROR	17
OASIS FILE SUBMISSION ERROR	17
SUBMISSION STATUS	18

INTRODUCTION

For home health agency users, the basic functions of the QIES ASAP OASIS system include:

- Establishing the communication connection with CMSNet
- Submitting electronic OASIS files

This section of the OASIS Submission User's Guide for the QIES ASAP system provides instructions for these functions.

ESTABLISHING THE COMMUNICATION CONNECTION

The communications component of the QIES ASAP system supports the transfer of OASIS data between agencies and the National Submissions Database. In order to connect to the National Submissions Database, you must first ensure that you have a CMSNet user ID and that communications software is correctly installed on your PC.

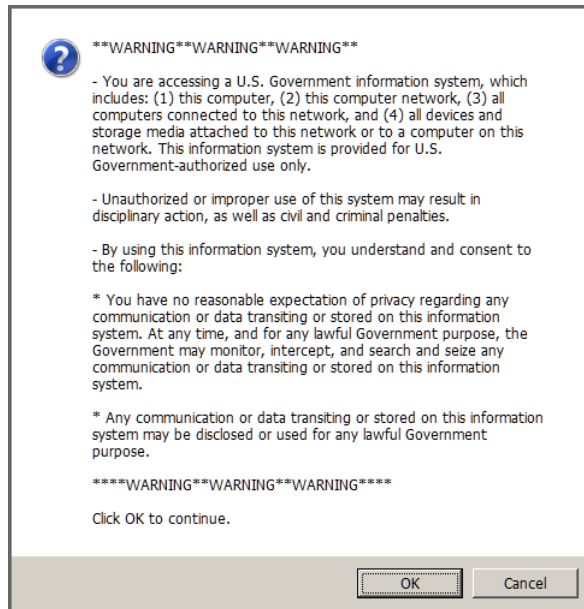
NOTE: To install software on your computer, you must have Administrative Rights. If you were not granted Administrative Rights to install software to your PC, please contact your computer support personnel.

To register for a CMSNet user ID, select the [CMSNet Online Registration](#) link found on the QIES Technical Support Office (QTSO) web site at <https://www.qtso.cms.gov/cmsnet.html> and complete the registration process through the CMSNet Remote Access Request Portal. A software installation guide for the CMSNet remote user is available on the same web page to assist you with the installation of the communications software. The software installation guide includes instructions for connecting to CMSNet once the software is installed.

NOTE: If you encounter difficulties connecting to CMSNet, contact the CMS Remote User Support Help Desk at (888) 238-2122.

When accessing a CMS web site a **U.S. Government-Authorized Use Only** pop-up window (Figure 3-1) is presented one or more times.

Figure 3-1. U.S. Government-Authorized Use Only Window



The **U.S. Government-Authorized Use Only** pop-up window states:

“??Warning??Warning??Warning??

- You are accessing a U.S. Government information system, which includes: (1) this computer, (2) this computer network, (3) all computers connected to this network, and (4) all devices and storage media attached to this network or to a computer on this network. This information system is provided for U.S. Government-authorized use only.

- Unauthorized or improper use of this system may result in disciplinary action, as well as civil and criminal penalties.

- By using this information system, you understand and consent to the following:

* You have no reasonable expectation of privacy regarding any communication or data transiting or stored on this information system. At any time, and for any lawful Government purpose, the Government may monitor, intercept, and search and seize any communication or data transiting or stored on this information system.

* Any communication or data transiting or stored on this information system may be disclosed or used for any lawful Government purpose.

??Warning??Warning??Warning??

Click OK to continue.”

You may select the **Cancel** button if you do not wish to access the CMS web site. Otherwise, select the **OK** button to proceed. A **Welcome to the CMS QIES Systems for Providers** page, similar to Figure 3-2 is presented.

Figure 3-2. CMS Systems for Providers Welcome Page



The **Welcome to the CMS QIES Systems for Providers** page includes links to the following features and functions:

- OASIS User Registration – the self-service Provider User Registration tool with which users register for a user account and User ID to access the OASIS submissions and CASPER Reporting systems.
- OASIS Submissions – the login page for the OASIS system to submit assessments or corrections to assessments.
- CASPER Reporting – the login page of the CASPER Reporting application so that you may request and view various provider reports.
- QIES User Maintenance Application – the login page for the QIES User Maintenance Application (QUMA) for user self-service password resetting and user account maintenance.
- QIES User Maintenance Application User's Guide – the user's guide for QUMA.
- OASIS Forms – access to a link to the CMSNet Access Request Form on the QTSO web site.

The **Welcome to the CMS QIES Systems for Providers** page also includes drop-down lists so that you may select and view the following user's guides/manuals:

- OASIS Submission User's Guide
- CASPER Reporting Users Guide for OASIS Providers

Select the [OASIS Submissions](#) link to access the **QIES National System Login** page for the OASIS File Submission system (Figure 3-3).

NOTE: Persons using the JAWS screen reader must start the JAWS application *prior* to accessing the **QIES National System Login** page in order to maintain password privacy.

Figure 3-3. QIES National System Login Page



The **QIES National System Login** page presents *User ID* and *Password* fields, a **Login** button, and an [Unable to login? Go to the QIES User Maintenance application to reset your User ID/Password](#) link with which you may access the QIES User Maintenance Application (QUMA) for password self-service functions.

The following shortcut keys are available for you to access elements of the **QIES National System Login** page:

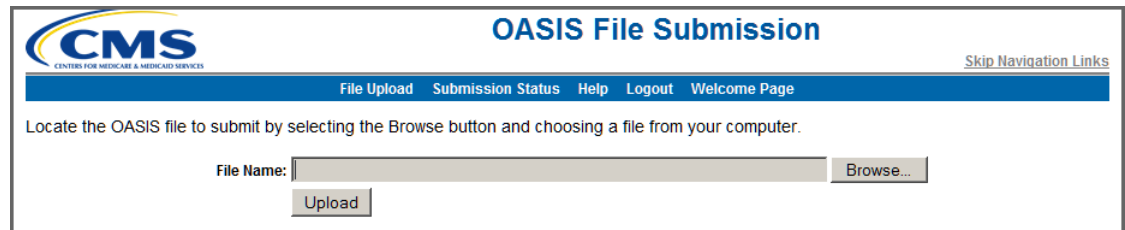
- | | |
|---------|-----------------------|
| Alt + u | User ID field |
| Alt + w | Password field |
| Alt + g | Login button |
| Alt + q | Unable to login? link |

Type your user ID and password in the appropriate fields and select the **Login** button.

NOTE: If presented, respond to the **U.S. Government-Authorized Use Only** (similar to Figure 3-1, above) warning once again.

The OASIS File Submission system **File Upload** page (Figure 3-4) is presented.

Figure 3-4. OASIS File Submission System File Upload Page



NOTE: After 12 minutes with no interaction with the server, a pop-up dialog box warns you that your online session will timeout in 3 minutes and asks if you would like to extend it. Select the **OK** button to extend your session. After 15 minutes of inactivity you are logged out of the OASIS File Submission system and must log in with your user ID and password in order to use the OASIS File Submission system once again.

Each page of the OASIS File Submission system includes the following constants:

- The CMS logo and the title of the application, OASIS File Submission, span the top
- A [Skip Navigation Links](#) link – to the far-right, under the CMS logo and the application title
The [Skip Navigation Links](#) link allows users utilizing assistive readers to bypass the menu bar items, moving focus to the main body of the current page. The keyboard shortcut to quickly bring focus to the [Skip Navigation Links](#) link is Alt + n. Once in focus, press Enter to activate the link.
- The OASIS File Submission system menu bar – under the [Skip Navigation Links](#) link
The OASIS File Submission system menu bar provides access to the functionality of the OASIS File Submission system.

MENU BAR

The OASIS File Submission system menu bar (Figure 3-5) includes the following options.

- File Upload
- Submission Status
- Help
- Logout
- Welcome Page

Figure 3-5. OASIS File Submission System Menu Bar



The following shortcut keys bring focus to items on the OASIS File Submission system menu bar:

Alt + 1	File Upload
Alt + b	Submission Status
Alt + p	Help
Alt + o	Logout
Alt + 0 (zero)	Welcome Page

With focus on one of these items, press the Enter key to access the associated function.

NOTE: Shortcut keys utilizing numbers function only with the numeric keys along the top of the keyboard. They do not function with the numeric keys in the “10-key” pad of the keyboard.

File Upload

The *File Upload* item on the OASIS File Submission menu bar allows you to access the OASIS File Submission **File Upload** page. Refer to the *Submitting OASIS Data* section below for a description of the **File Upload** page functionality.

Submission Status

The *Submission Status* item on the OASIS File Submission menu bar allows you to access the OASIS File Submission **List of My Submissions** page. Refer to the *Submission Status* section below for a description of the **List of My Submissions** page functionality.

Help

The *Help* item on the OASIS File Submission menu bar allows you to access the OASIS File Submission Help items, which include the **Accessibility Policy**, **Contact Us**, and **Privacy Policy** pages. The **Accessibility Policy** page (Figure 3-6, below) is presented when you select the Help item on the OASIS File Submission menu bar.

The following links are available on all Help pages:

- [Accessibility Policy](#)
- [Contact Us](#)
- [Privacy Policy](#)

The following shortcut keys bring focus to the links on the OASIS File Submission Help pages:

Alt + 7	Accessibility Policy
Alt + 8	Contact Us
Alt + 9	Privacy Policy

With focus on one of these items, press the Enter key to access the associated function.

NOTE: Shortcut keys utilizing numbers function only with the numeric keys along the top of the keyboard. They do not function with the numeric keys in the “10-key” pad of the keyboard.

Accessibility Policy

The [Accessibility Policy](#) link accesses the OASIS File Submission **Accessibility Policy** page (Figure 3-6).

Figure 3-6. OASIS File Submission Accessibility Policy Page

OASIS File Submission

[Skip Navigation Links](#)

[File Upload](#) [Submission Status](#) [Help](#) [Logout](#) [Welcome Page](#)

Accessibility Policy

The QIES Technical Support Office makes every effort to ensure our Web site is accessible for people with disabilities and meets current accessibility standards, including those defined by Section 508 of the U.S. Rehabilitation Act and the W3C's Web Content Accessibility Guidelines. We are actively engaged in the ongoing process of testing our Web site for compliance with current accessibility standards.

We are committed to addressing issues that prevent people with disabilities from accessing our site and its content in a timely manner. If you should find that you are unable to or have difficulty accessing information via our Web site, please contact our help desk.

E-mail: help@qtso.com
Phone: 800-339-9313

[Accessibility Policy](#) | [Contact Us](#) | [Privacy Policy](#)

The OASIS File Submission **Accessibility Policy** page displays the following message:

“The QIES Technical Support Office makes every effort to ensure our Web site is accessible for people with disabilities and meets current accessibility standards, including those defined by Section 508 of the U.S. Rehabilitation Act and the W3C’s Web Content Accessibility Guidelines. We are actively engaged in the ongoing process of testing our Web site for compliance with current accessibility standards.

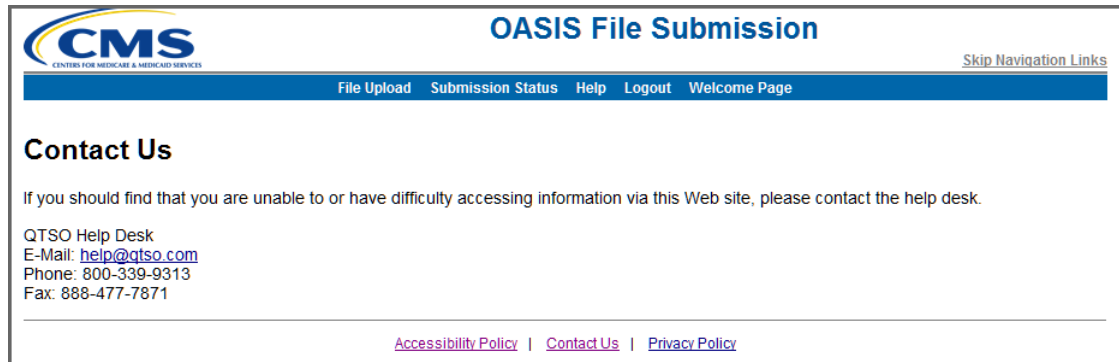
We are committed to addressing issues that prevent people with disabilities from accessing our site and its content in a timely manner. If you should find that you are unable to or have difficulty accessing information via our Web site, please contact our help desk.

E-mail: help@qtso.com
Phone: 800-339-9313”

Contact Us

The [Contact Us](#) link accesses the OASIS File Submission **Contact Us** page (Figure 3-7).

Figure 3-7. OASIS File Submission Contact Us Page



The OASIS File Submission **Contact Us** page displays the following message:

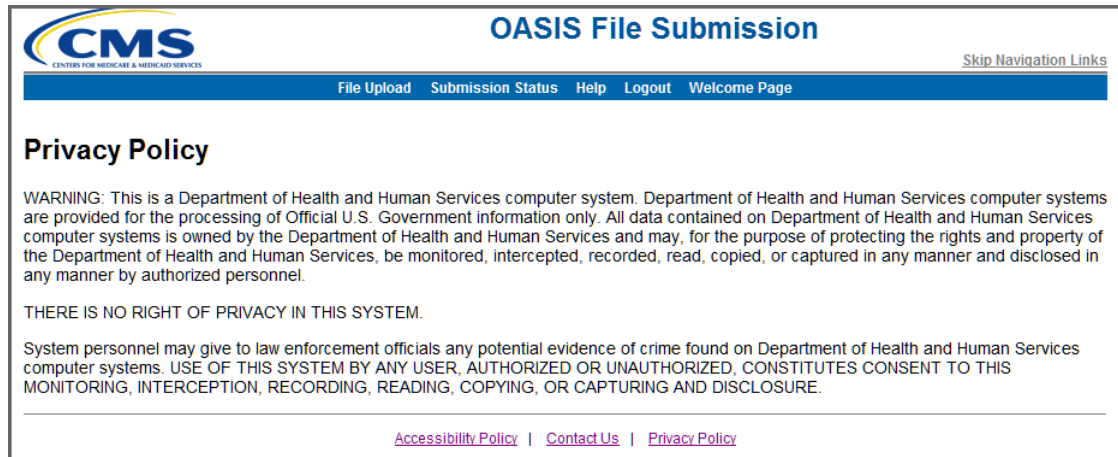
“If you should find that you are unable to or have difficulty accessing information via this Web site, please contact the help desk.

QTSO Help Desk
E-Mail: help@qtso.com
Phone: 800-339-9313
Fax: 888-477-7871”

Privacy Policy

The [Privacy Policy](#) link accesses the OASIS File Submission **Privacy Policy** page (Figure 3-8).

Figure 3-8. OASIS File Submission Privacy Policy Page



OASIS File Submission

[Skip Navigation Links](#)

[File Upload](#) [Submission Status](#) [Help](#) [Logout](#) [Welcome Page](#)

Privacy Policy

WARNING: This is a Department of Health and Human Services computer system. Department of Health and Human Services computer systems are provided for the processing of Official U.S. Government information only. All data contained on Department of Health and Human Services computer systems is owned by the Department of Health and Human Services and may, for the purpose of protecting the rights and property of the Department of Health and Human Services, be monitored, intercepted, recorded, read, copied, or captured in any manner and disclosed in any manner by authorized personnel.

THERE IS NO RIGHT OF PRIVACY IN THIS SYSTEM.

System personnel may give to law enforcement officials any potential evidence of crime found on Department of Health and Human Services computer systems. USE OF THIS SYSTEM BY ANY USER, AUTHORIZED OR UNAUTHORIZED, CONSTITUTES CONSENT TO THIS MONITORING, INTERCEPTION, RECORDING, READING, COPYING, OR CAPTURING AND DISCLOSURE.

[Accessibility Policy](#) | [Contact Us](#) | [Privacy Policy](#)

The OASIS File Submission **Privacy Policy** page displays the following message:

“WARNING: This is a Department of Health and Human Services computer system. Department of Health and Human Services computer systems are provided for the processing of Official U.S. Government information only. All data contained on Department of Health and Human Services computer systems is owned by the Department of Health and Human Services and may, for the purpose of protecting the rights and property of the Department of Health and Human Services, be monitored, intercepted, recorded, read, copied, or captured in any manner and disclosed in any manner by authorized personnel.

THERE IS NO RIGHT OF PRIVACY IN THIS SYSTEM.

System personnel may give to law enforcement officials any potential evidence of crime found on Department of Health and Human Services computer systems. USE OF THIS SYSTEM BY ANY USER, AUTHORIZED OR UNAUTHORIZED, CONSTITUTES CONSENT TO THE MONITORING, INTERCEPTION, RECORDING, READING, COPYING, OR CAPTURING AND DISCLOSURE.”

Logout

The *Logout* item on the OASIS File Submission menu bar allows you to end your session and exit the OASIS File Submission system. When you select the Logout item, the **QIES National System Login** page (Figure 3-3, above) is presented.

Welcome Page

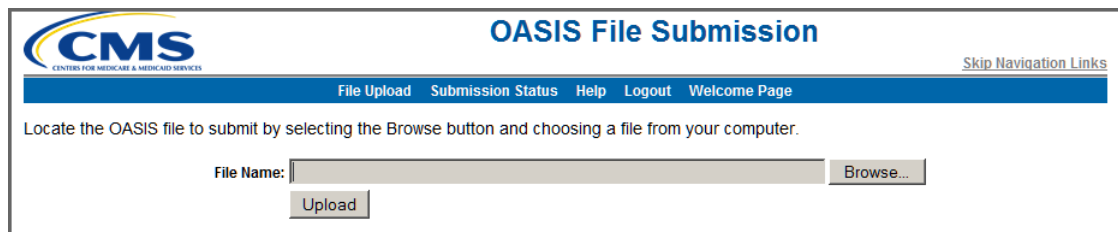
The *Welcome Page* item on the OASIS File Submission menu bar allows you to access the **Welcome to the CMS Systems for Providers** page (Figure 3-2, above) and the links found there to the CASPER Reporting system and the CASPER Reporting user's manual.

SUBMITTING OASIS DATA

1. To submit OASIS data, access the OASIS File Submission **File Upload** page (Figure 3-9). The OASIS File Submission **File Upload** page is presented by default when you successfully log into the system.

NOTE: You must use software capable of encoding OASIS assessment records and exporting data files in accordance with CMS's standard OASIS record layout specifications.

Figure 3-9. OASIS File Submission File Upload Page



The screenshot shows the OASIS File Submission File Upload page. At the top left is the CMS logo. The page title is "OASIS File Submission". A navigation bar contains links for "File Upload", "Submission Status", "Help", "Logout", and "Welcome Page". Below the navigation bar, there is a text prompt: "Locate the OASIS file to submit by selecting the Browse button and choosing a file from your computer." The main form area contains a "File Name:" label followed by a text input field, a "Browse..." button, and an "Upload" button.

The OASIS File Submission system **File Upload** page includes a *File Name* field and **Browse** and **Upload** buttons.

The following shortcut keys bring focus to elements of the OASIS File Submission system **File Upload** page:

Alt + 2	File Name field
Alt + 3	Upload button
Alt + 4	Top of page

NOTE: Shortcut keys utilizing numbers function only with the numeric keys along the top of the keyboard. They do not function with the numeric keys in the “10-key” pad of the keyboard.

The OASIS File Submission system **File Upload** page provides the following instructions:

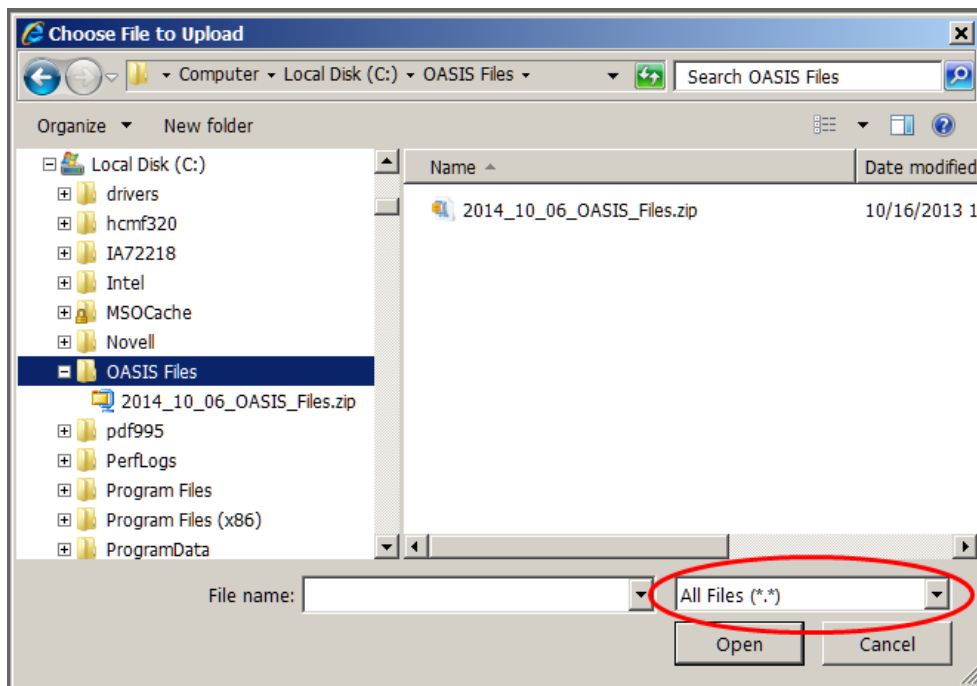
“Locate the OASIS file to submit by selecting the *Browse* button and choosing a file from your computer.”

2. Select the **Browse** button to locate the file you wish to upload.

NOTE: If you use the JAWS screen reader with Form Mode turned off, you must press the Space bar twice in the *File Name* field to select the **Browse** button and access a **Choose File** dialog box.

Depending upon the version of Windows running on your computer, a **Choose File to Upload** (Figure 3-10) or similar dialog box is presented with which you can browse the folders and files on your computer or network.

Figure 3-10. Windows Choose File to Upload Dialog Box



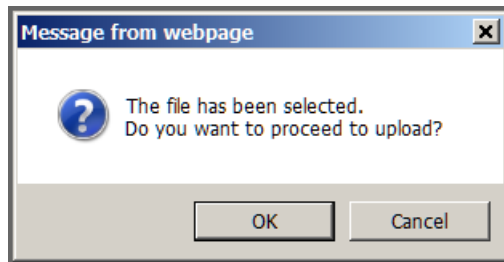
Select *All Files* from the drop-down list in the *Files of type* field so that you do not limit the types of files shown in the list.

NOTE: The OASIS File Submission system only processes compressed (zipped) files with a “.zip” extension. You may not upload a file with anything other than a “.zip” extension.

Select the drive on which your submission file is stored (C: is your computer’s hard drive). The folders and/or file(s) available on the selected drive are listed in the main body of the dialog box.

3. To select a file for submission, double click on the file name or highlight the file name and then select the **Open** button. The **Choose File to Upload** dialog box is closed and a **Proceed to Upload?** dialog box (Figure 3-11) is presented.

Figure 3-11. Proceed to Upload? Dialog Box

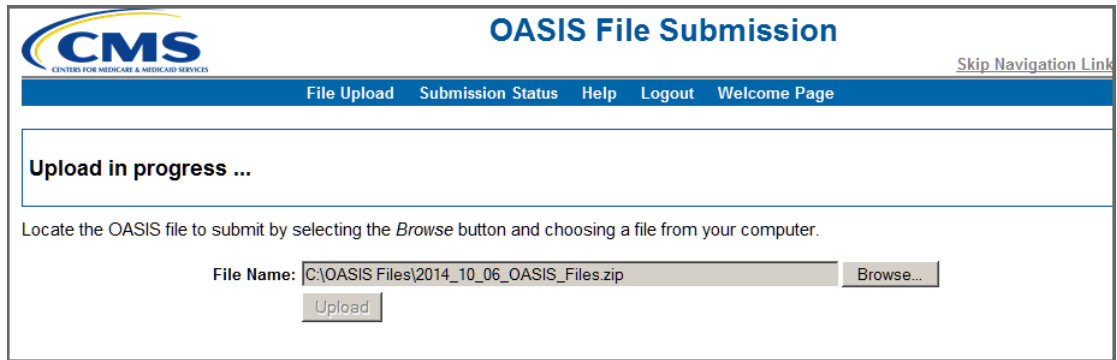


The **Proceed to Upload?** dialog box indicates “The file has been selected. Do you want to proceed to upload?” and includes **OK** and **Cancel** buttons.

4. Select the **OK** button if you wish to proceed with the upload of the selected file.

The name of the selected file is populated into the *File Name* field on the OASIS File Submission **File Upload** page and the upload proceeds immediately. The OASIS File Submission **File Upload** page displays an “Upload in progress ...” message (Figure 3-12).

Figure 3-12. Upload In Progress Message

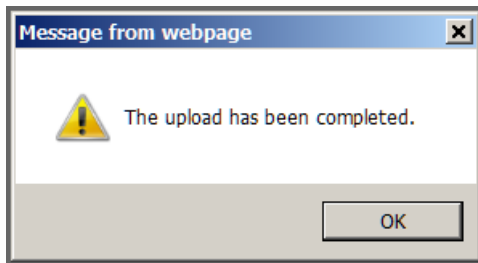


The screenshot shows the OASIS File Submission web interface. At the top left is the CMS logo (Centers for Medicare & Medicaid Services). To the right is the title "OASIS File Submission" and a "Skip Navigation Link" in the top right corner. Below the title is a navigation bar with links: "File Upload", "Submission Status", "Help", "Logout", and "Welcome Page". The main content area has a heading "Upload in progress ..." followed by the instruction: "Locate the OASIS file to submit by selecting the *Browse* button and choosing a file from your computer." Below this is a text input field for "File Name:" containing the path "C:\OASIS Files\2014_10_06_OASIS_Files.zip", a "Browse..." button, and an "Upload" button.

NOTE: The time it takes for the OASIS File Submission system to receive the OASIS data file you submitted depends upon the size of your file and concurrent system activity. Until you receive confirmation that your file was successfully uploaded, do not exit the OASIS File Submission system or perform any other function. You risk interrupting the file upload process if you do not wait for the confirmation message.

When the submitted file is successfully received at the National Submissions Database, an **Upload Completed** dialog box (Figure 3-13) is presented.

Figure 3-13. Upload Completed Dialog Box



- 5.** Select the **OK** button to continue.

The OASIS File Submission **File Upload** page now displays a message (Figure 3-14) confirming that the file you submitted was successfully received at the National Submissions Database.

Figure 3-14. Submission Received Confirmation Message

OASIS File Submission

File Upload Submission Status Help Logout Welcome Page

Your submission has been received:

Submission ID: 8100022 [Print](#)
Submission Date: 10/31/2013 12:04:52
File Name: 2014_10_06_OASIS_Files.zip

Your submission file will be processed for errors within 24 hours. The Final Validation Report, which contains detailed information about your submission, may be accessed in the CASPER Reporting application. It is recommended that you print and retain the Final Validation Reports.

Locate the OASIS file to submit by selecting the *Browse* button and choosing a file from your computer.

File Name:

The submission received confirmation message provides the following information:

- Submission ID – the numeric identifier assigned to your file by the OASIS File Submission system
- Submission Date – the date and time that the National Submissions Database received your file in the Eastern time zone
- File Name – the name of the file that you submitted

The confirmation message also includes the following notation:

“Your submission file will be processed for errors within 24 hours. The Final Validation Report, which contains detailed information about your submission, may be accessed in the CASPER Reporting application. It is recommended that you print and retain the Final Validation Reports.”

NOTE: The confirmation message only indicates successful receipt of the file at the National Submissions Database. Errors that exist in the submitted file are identified only after the OASIS system subsequently validates the file.

- 6.** Print the confirmation message for your records at this time. The confirmation message is cleared once you perform another OASIS File Submission function and is **not** available for printing later. A [Print](#) link [Alt + r] is provided for your convenience.

NOTE: Please print the confirmation message or otherwise note this information so that you may identify the corresponding OASIS Agency Final Validation Report in the CASPER Reporting application. The Submission ID and the Submission Date/Time are also needed if you must report a problem with the submission to the QTSO Help Desk.

7. You may now submit another file or log out of the OASIS File Submission system.

After your submitted OASIS data file is successfully received at the National Submissions Database, the OASIS system validates the file structure and data content based upon the OASIS data specifications. Within 24 hours of a successful submission, you may access an OASIS Agency Final Validation Report in the CASPER Reporting application that provides a detailed account of any errors found during the validation of the records in the submitted OASIS file.

Records in the submitted OASIS data file are sorted and processed in the following order:

- State Code
- Agency ID
- Effective Date
- Type of Transaction/Record
- Reason for Assessment
- Correction Number

SUBMISSION SYSTEM ERRORS

During the OASIS file submission process, you may encounter one or more of the error conditions described below.

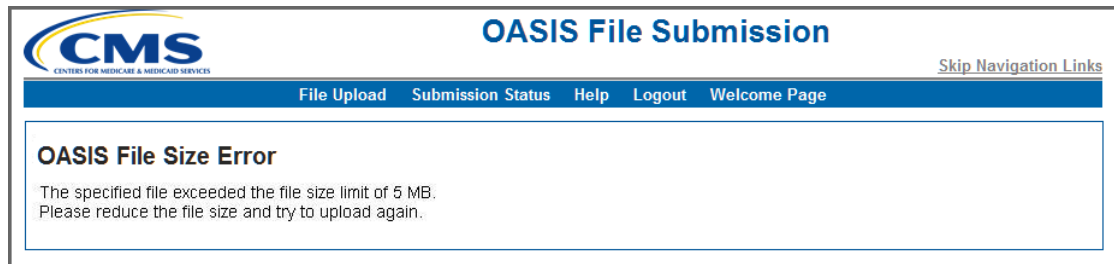
If you experience error messages or warnings from other software or hardware components used in association with the OASIS File Submission system, please refer to the appropriate vendor-provided manuals.

NOTE: Errors that are identified during the validation process are documented in Section 5, *Error Messages*, of this user's guide.

OASIS File Size Error

The **OASIS File Size Error** page (Figure 3-15) is presented when the size of your submission file is larger than is allowed.

Figure 3-15. OASIS File Size Error Page



The **OASIS File Size Error** page displays the following message:

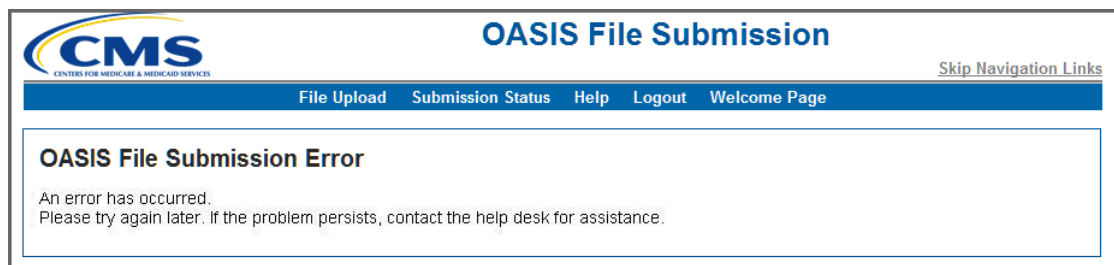
"The specified file exceeded the file size limit of 5 MB. Please reduce the file size and try to upload again."

Please recreate the compressed (zipped) submission file with fewer assessments so that the size of the submission file is less than 5 MB.

OASIS File Submission Error

The **OASIS File Submission Error** page (Figure 3-16) is presented when the upload fails due to an exception condition or interruption.

Figure 3-16. OASIS File Submission Error Page



The **OASIS File Submission Error** page displays the following message:

"An error has occurred. Please try again later. If the problem persists, contact the help desk for assistance."

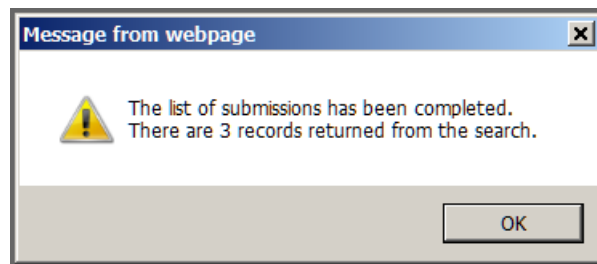
Please attempt to upload your submission file later. If the error continues to occur, call the QTSO Help Desk for assistance.

SUBMISSION STATUS

The OASIS File Submission system allows you to query and view the status of select submission files you successfully uploaded to the National Submissions Database.

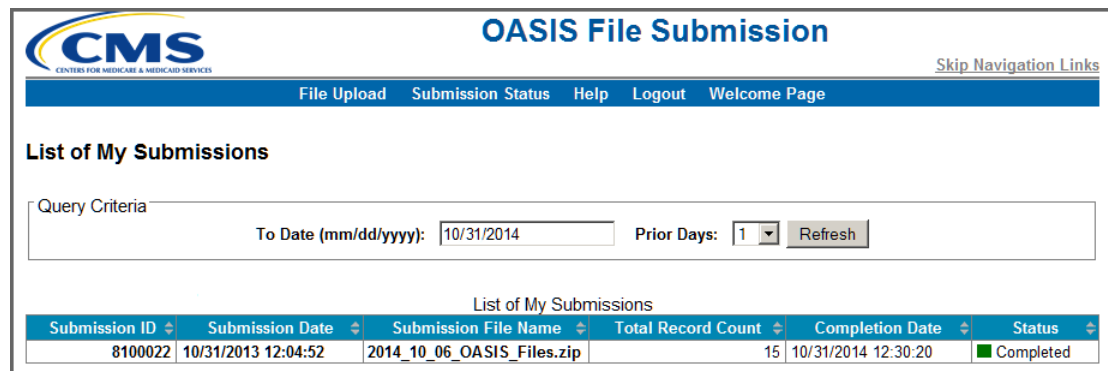
To perform the default query that returns a list of the submission files you successfully uploaded today and yesterday, select the Submission Status item from the OASIS File Submission system menu bar. A **Search Completed** dialog box (Figure 3-17) is presented indicating the number of records returned by the default search criteria.

Figure 3-17. Search Completed Dialog Box



Select the **OK** button to continue. The **Search Completed** dialog box closes, leaving the **List of My Submissions** page (Figure 3-18) in full view.

Figure 3-18. List of My Submissions Page



Submission ID	Submission Date	Submission File Name	Total Record Count	Completion Date	Status
8100022	10/31/2013 12:04:52	2014_10_06_OASIS_Files.zip	15	10/31/2014 12:30:20	Completed

The **List of My Submissions** page lists, by default, the submissions successfully uploaded yesterday and today that are associated with your user ID. For each submission the following information is provided in a tabular format:

- Submission ID – the numeric identifier assigned to a submission by the OASIS Submission system
- Submission Date – the date and time that the National Submissions Database received your file in the Eastern time zone

- Submission File Name – the name of the file that you submitted
- Total Record Count – the number of records in the submitted file
- Completion Date – the date and time that the OASIS Submission system completed validation of your file in the Eastern time zone
- Status – the current status of the submitted file:
 - Waiting – the submission file is waiting to be processed by the National Submissions System
 - Processing – the submission file is being processed by the National Submissions System
 - Completed – the submission file processing is complete
 - Error – a system error occurred during the processing of the file

NOTE: The list of submissions is presented in descending order by Submission ID. You can change the sort order of the tabular list by selecting the desired column heading.

The **List of My Submissions** page includes the following fields with which you can customize the query for submission files:

- *To Date* – the inclusive end date of the query in mm/dd/yyyy format; The default value is today’s date.
- *Prior Days* – the number of days prior to the *To Date* you wish to query; The default value is 1, which includes submission records for today and yesterday (one day prior to today) in the query. The drop-down list associated with the *Prior Days* field includes options 0, 1, 2, 5, 10, and 30.

If you wish to view submissions for dates other than today and yesterday, modify the *To Date* and/or the *Prior Days* values and select the **Refresh** button.

NOTE: To print the **List of My Submissions** page, use the print function of your browser by accessing the *File* menu and then selecting the *Print* option.

The following shortcut keys bring focus to elements of the OASIS File Submission system **List of My Submissions** page:

- | | |
|---------|------------------|
| Alt + 2 | To Date field |
| Alt + 3 | Prior Days field |
| Alt + s | Refresh button |

NOTE: Shortcut keys utilizing numbers function only with the numeric keys along the top of the keyboard. They do not function with the numeric keys in the “10-key” pad of the keyboard.